

Sunday

Monday

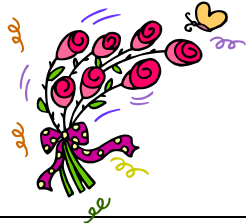
Tuesday

Wednesday

Thursday

Friday

Saturday



May 2024

			<p>1 10AM Earnest Workers</p> <p>4:30-6PM Watjen Center in use</p> <p>6PM Choir rehearsal</p> <p>HOW</p>	<p>2</p>	<p>3</p>	<p>4 8:30-3:30PM Watjen Center in use</p>
<p>5 9:00 & 10:30AM Worship 9AM K-8th Children begin in church with family</p> <p>Baptism</p> <p>5-7PM Confirmands Faith Stories</p>	<p>6 6:30PM Church Council</p>	<p>7 11AM Knitting /Crafts Rm 1</p>	<p>8 4:30-6PM Watjen Center in use</p> <p>6PM Choir rehearsal</p> <p>HOW</p>	<p>9 10-Noon Staff Meeting</p>	<p>10</p>	<p>11 8:30-3:30PM Watjen Center in use</p> <p>10-1PM Hall in use</p> <p>Set up Mother's Day Café</p>
<p>12 MOTHER'S DAY 9:00 & 10:30AM Worship Church School 9AM</p> <p>Baptism</p> <p>8th grader's Mother's Day Cafe</p>	<p>13 6:30PM Mandatory Communion Class Reh.</p>	<p>14 11AM Knitting /Crafts Rm 1</p> <p>6:30PM Mission</p>	<p>15 4:30-6PM Watjen Center in use</p> <p>6PM Choir rehearsal</p> <p>HOW</p>	<p>16</p>	<p>17</p>	<p>18 8:30-3:30PM Watjen Center in use</p> <p>9-10AM Teddy Bear Daycare using hall</p>
<p>19 PENTECOST SUNDAY COMMUNION CELEBRATION 9:30AM Worship K-8th begin in church with family No 2nd grade class 11AM Worship & Children's Communion Ceremony</p> <p>4-6PM Hall in use</p>	<p>20 6:30PM Trustees</p>	<p>21 11AM Knitting /Crafts Rm 1</p> <p>6:30PM Music & the Arts</p>	<p>22 4:30-6PM Watjen Center in use</p> <p>6PM Choir rehearsal</p> <p>HOW</p>	<p>23 6PM Mission Book Club @ Bonnie's</p>	<p>24 Hall use 10AM set up for use on Saturday</p>	<p>25 8:30-3:30PM Watjen Center in use</p> <p>5-10PM Hall use (previous set up on Friday)</p>
<p>26 MEMORIAL DAY 9:30AM Worship</p>	<p>27 Memorial Day Observed</p>	<p>28 11AM Knitting /Crafts Rm 1</p>	<p>29 9-4PM Hall and Sanctuary in use</p> <p>4:30-6PM Watjen Center in use</p> <p>HOW</p>	<p>30 6PM Choir rehearsal</p>	<p>31</p>	<p>TRUSTEE OF THE MONTH Linda Sable... 508-336-3492</p>